

Philips Evnia Gaming
Monitor
Quad HD gaming monitor

Evnia 5000

27" (68.5 cm)
2560 x 1440 (QHD)

27M2N5500/00



Your gaming experience to the utmost

This monitor is equipped for any game. With its 0.5ms MPRT, 180Hz refresh rate, and Quad HD resolution, it is made to bring gamers an all-around and visually pleasing gaming experience.

Immersive visuals

- SmartContrast for deep black level details
- Crystalclear images with Quad HD 2560 x 1440 pixels
- 1.07 billion colors for stunning color and finest gradations
- DisplayHDR 400 for more lifelike and outstanding visuals

Built for fast action

- 180Hz refresh rates for ultra-smooth, brilliant images
- 0.5ms (MPRT) fast response for crisp image and smooth gameplay
- SmartImage game mode optimized for gamers

Features designed for gamers needs

- EasySelect menu toggle key for quick on-screen menu access
- New OSD features for much more engaging gaming experience
- SmartErgoBase enables people-friendly ergonomic adjustments
- SmartImage game mode optimized for gamers
- LowBlue Mode for easy on-the-eyes productivity
- Smart Crosshair: for better aim and more fun



EVNIA

PHILIPS

Quad HD gaming monitor
Evnia 5000 27" (68.5 cm), 2560 x 1440 (QHD)

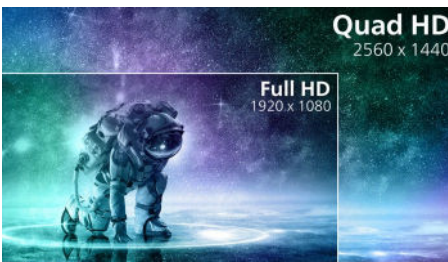
Highlights

IPS technology



IPS displays use an advanced technology which gives you extra wide viewing angles of 178/178 degree, making it possible to view the display from almost any angle. Unlike standard TN panels, IPS displays gives you remarkably crisp images with vivid colors, making it ideal not only for Photos, movies and web browsing, but also for professional applications which demand color accuracy and consistent brightness at all times.

Crystalclear images



These Philips screens deliver Crystalclear, Quad HD 2560x1440 or 2560x1080 pixel images. Utilizing high performance panels with high density pixel count, enabled by high bandwidth sources like USB-C, Displayport, HDMI, these new displays will make your images and graphics come alive. Whether you are demanding professional requiring extremely detailed information for CAD-CAM solutions, using 3D graphic applications or a financial wizard working on huge spreadsheets,

Philips displays will give you Crystalclear images.

180Hz Gaming



You play intense, competitive gaming. You demand display with lag free, ultra-smooth images. This display redraws the screen image up-to 180 times per second, effectively faster than a standard display. A lower frame rate can make enemies appear to jump from spot to spot on the screen, making them difficult targets to hit. With 180Hz frame rate, you get those critical missing images on the screen which shows enemy movement in ultra-smooth motion so you can easily target them. With ultra-low input lag and no screen tearing, this Philips display is your perfect gaming partner.

0.5ms MPRT fast response



MPRT (motion picture response time) is more intuitive way to describe the response time, which directly refers the duration from seeing blurry noise to clean and crisp images. Philips gaming monitor with 0.5 ms MPRT effectively

27M2N5500/00

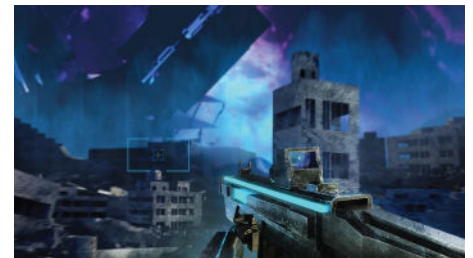
eliminates smearing and motion blur, delivers sharper and precise visuals to enhance gaming experience. Best choice for playing thrilling and twitch-sensitive games.

DisplayHDR 400



VESA-certified DisplayHDR 400 delivers a significant step-up from normal SDR displays. Unlike, other 'HDR compatible' screens, true DisplayHDR 400 produces astonishing brightness, contrast and colors. With global dimming and peak brightness up-to 400 nits, images come to life with notable highlights while featuring deeper, more nuanced blacks. It renders a fuller palette of rich new colors, delivering a visual experience that engages your senses.

New features for better gaming



Philips Evnia is equipped with new features in OSD (on-screen display). Smart MBR Sync enables a great pair of MPRT together with Adaptive-sync, eliminating motion blur and ghosting while guaranteeing sharp and speedy gaming visuals with high frame rates. Stark ShadowBoost enhances dark scenes, allowing more details without overexposure. Smart Crosshair lets you never miss a single target.



Specifications

Picture/Display

- LCD panel type: IPS technology
- Backlight type: W-LED system
- Panel Size: 27 inch / 68.5 cm
- Display Screen Coating: Anti-Glare, 3H, Haze 25%
- Effective viewing area: 596.736 (H) x 335.664 (V)
- Aspect ratio: 16:9
- Maximum resolution: 2560 x 1440 @ 144 Hz (HDMI); 2560 x 1440 @ 180 Hz* (DP)
- Pixel Density: 108.79 PPI
- Response time (typical): 1 ms (Gray to Gray)*
- Low Input Lag*
- Brightness: 350 cd/m²
- Brightness Uniformity: 93-105%
- SmartContrast: Mega Infinity DCR
- Contrast ratio (typical): 1200:1
- Pixel pitch: 0.2331 x 0.2331 mm
- Viewing angle: 178° (H) / 178° (V), @ C/R > 10
- Flicker-free
- HDR: DisplayHDR 400 certified
- Picture enhancement: SmartImage game
- Display colors: 1.07B (8-bits+FRC)
- Scanning Frequency: HDMI: 30 - 230 kHz (H) / 48 - 144 Hz (V); DP: 30 - 280 kHz (H) / 48 - 180 Hz (V)
- Delta E: < 2 (sRGB)
- LowBlueMode
- EasyRead
- sRGB
- Adaptive sync
- MPRT: 0.5ms
- Smart Crosshair: Yes
- Shadow Boost
- Smart MBR (MPRT)

Connectivity

- Signal Input: HDMI 2.0 x 2, DisplayPort 1.4 x 1
- HDCP: HDCP 1.4 (HDMI / DP), HDCP 2.2 (HDMI / DP)
- Audio (In/Out): Headphone out
- Sync Input: Separate Sync

Convenience

- User convenience: Power On/Off, Menu/OK, Input/Up, Game Settings/Down, SmartImage game/Back
- OSD Languages: Brazil Portuguese, Czech, Dutch, English, Finnish, French, German, Greek, Hungarian, Italian, Japanese, Korean, Polish, Portuguese, Russian, Spanish, Simplified Chinese, Swedish, Turkish, Traditional Chinese, Ukrainian
- Other convenience: Kensington lock, VESA mount (100x100mm), Halolight, LowBlue Mode
- Plug & Play Compatibility: DDC/CI, Mac OS X, sRGB, Windows 11 / 10

Stand

- Height adjustment: 130 mm
- Pivot: -/+ 90 degree
- Swivel: -/+ 30 degree
- Tilt: -5/20 degree

Power

- Standby mode: 0.5 W (typ.)
- Off mode: 0.3 W (typ.)
- Power LED indicator: Operation - White, Standby mode- White (blinking)
- Power supply: 100-240VAC, 50-60Hz, Internal
- On mode: 29.8 W (typ.)

Dimensions

- Packaging in mm (WxHxD): 730 x 478 x 188 mm
- Product with stand(max height): 614 x 519 x 261 mm
- Product without stand (mm): 614 x 368 x 60 mm

Weight

- Product with stand (kg): 5.68 kg
- Product without stand (kg): 3.86 kg
- Product with packaging (kg): 9.32 kg

Operating conditions

- Temperature range (operation): 0°C to 40 °C
- Temperature range (storage): -20°C to 60 °C
- Relative humidity: 20%-80 %
- Altitude: Operation: +12,000ft (3,658m), Non-operation: +40,000ft (12,192m)
- MTBF: 50,000 (Excluded backlight) hour(s)

Sustainability

- Environmental and energy: RoHS
- Recyclable packaging material: 100 %
- Post consumer recycled plastics: 85 %*
- Specific Substances: Mercury free, PVC / BFR free housing

Compliance and standards

- Regulatory Approvals: CB, TUV, EAC, MEPS, PSB, CEL, CCC, CECP, BSMI, KC-EMC, CE, UKCA, EMF, FCC, ICES-0036CECP, CEL, CCC

Cabinet

- Color: Dark Slate
- Finish: Textured

Issue date 2024-01-29

© 2024 Koninklijke Philips N.V.
All Rights reserved.

Version: 0.0.0

Specifications are subject to change without notice.
Trademarks are the property of Koninklijke Philips N.V.
or their respective owners.

12NC: 8670 001 93249
EAN: 87 12581 80964 5

www.philips.com

* "IPS" word mark / trademark and related patents on technologies belong to their respective owners.
* The maximum resolution works for DP input only.
* For best output performance, please always ensure that your graphic card is capable of achieving the maximum resolution and refresh rate of this Philips display.
* Response time value equal to SmartResponse
* MPRT is to adjust brightness for blur reduction, so cannot adjust brightness while MPRT is turned on. To reduce motion blur, LED backlight will strobe synchronously with screen refresh, which may cause noticeable brightness change.
* MPRT is gaming-optimized mode. Turn on MPRT may cause noticeable screen flickering. It is recommended to turn off when you are not using the gaming function.
* The products and accessories listed on this leaflet may differ by country and region.
* This monitor strives for sustainability: the stand's feet are made with 35% recycled plastic and the monitor's chassis is made up of 85% post-consumer recycled plastic.
* Please note that the low input lag feature is permanently enabled and cannot be switched off.
* The monitor may look different from feature images.